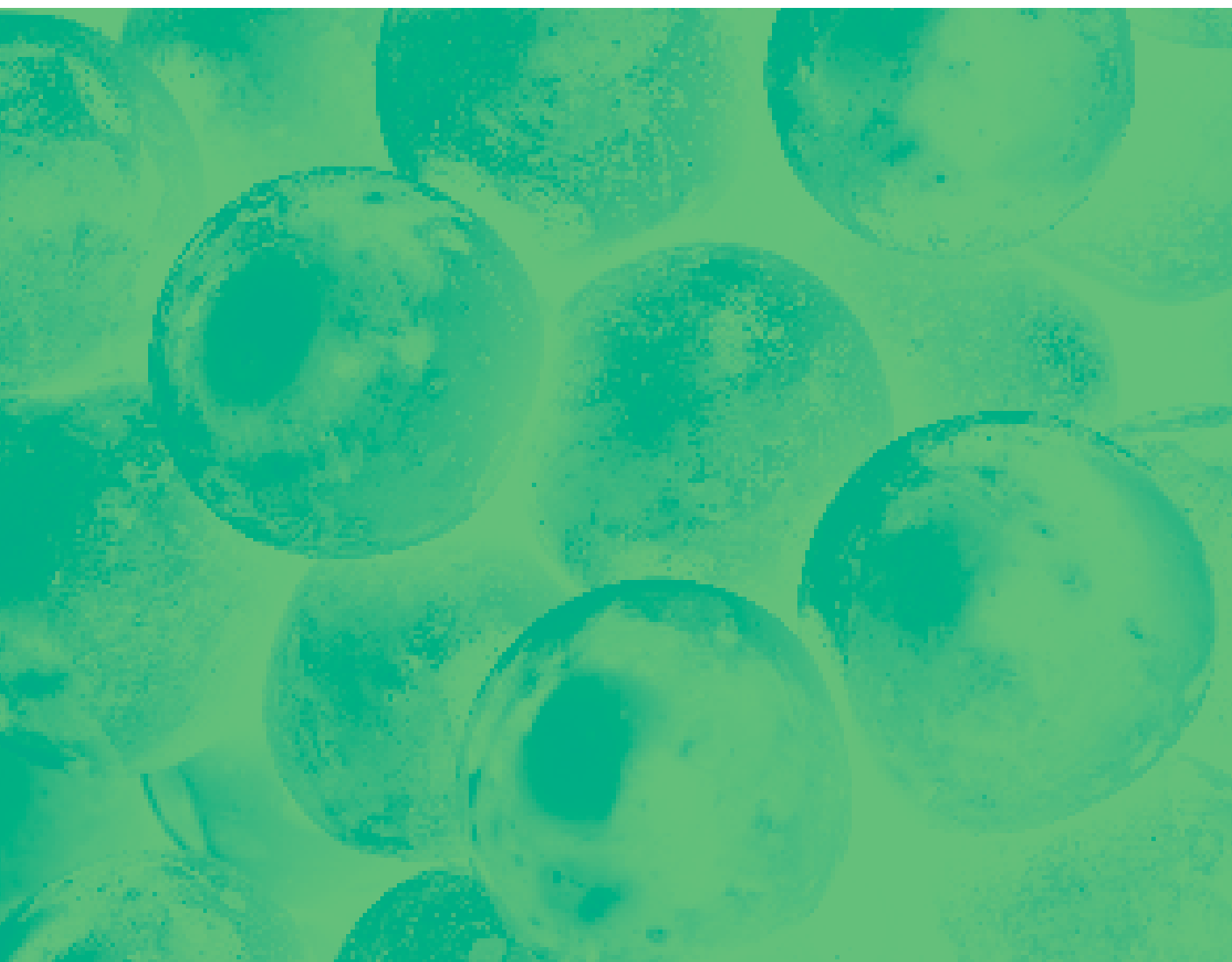




**Naturland**

Product catalogue





# Index

|  |   |   |
|--|---|---|
|  <b>Amino acids</b><br>p. 02                        | Aminat Ca p. 03<br>Aminat Magnum p. 04<br>Aminat Silica p. 05   | Aminat-I p. 06<br>Aminat-I Plus p. 07<br>Natur Gordo p. 08  |
|  <b>Seaweed</b><br>p. 10                            | Algamax-P p. 11<br>Algamoto p. 12<br>F-16 p. 13   | Natlag Zn-Mn p. 14<br>Natur Colortac p. 15  |
|  <b>Specials</b><br>p. 16                           | Natur Chito p. 17<br>Natur Cuaje p. 18<br>Natur Innova p. 19  | Natur Proline p. 20   |
|  <b>Rooters</b><br>p. 22                            | Rooter p. 23<br>Rooter Plus p. 24   |   |
|  <b>Soluble NPKs</b><br>p. 26                     | Natur 20-20-20 p. 27<br>Natur 18-18-18 p. 28  |   |
|  <b>Salinity corrector</b><br>p. 30               | Natur Sal p. 31<br>Sal Complex p. 32  |   |
|  <b>Chelates and correctors</b><br>p. 34          | Cal Natur p. 35<br>Magic Cal Flow p. 36<br>Natur Boro p. 37<br>Natur K30 p. 38                            | Natur Mn p. 39<br>Natur Zn p. 40<br>Natur Potásico p. 41<br>Natur Sili-K p. 42                                      |
|  <b>Multiple deficiency corrector</b><br>p. 44    | Natur B-Mo p. 45<br>Natur B-Mo ECO p. 46<br>Natur B-Mo-Co p. 47<br>Natur Ca SET p. 48<br>Natur Ca-B p. 49 | Natur Ca-B-Mg Flow p. 50<br>Natur Elem p. 51<br>Natur Ferro 48 p. 52<br>Natur K-S Flow p. 53<br>Natur Nutri 4 p. 54 |
|  <b>Organic material and humic acids</b><br>p. 56 | Humsuper p. 57<br>Orgo 40 p. 58<br>Natur Hum 25 p. 59   |   |

# Amino acids

- Aminat Ca
- Aminat Magnum
- Aminat Silica
- Aminat-I
- Aminat-I Plus
- Natrur Gordo



# Aminat-Ca

Fertilizer with amino acids (Ca) (14) with boron



## What does it provide us?

**Aminat-Ca** contains amino acids of vegetable origin. It is a product composed of amino acids, Calcium and Boron, therefore, it has preventive effect for cases of Calcium and/or Boron deficiency. It should be applied especially in the phases of strong growth and development of the plant. It is absorbed and delivered to the parts of the plant with greater activity giving a high supply of nutrients.

**Aminat-Ca** has a strong effect on the transport and regular supply of mineral salts and other elements available in the soil. Amino acids contribute to the absorption of calcium through the roots and leaves.

## Compatibility

**Aminat-Ca** is unstable with bases. Do not mix with bases in general, with sulfates or phosphates. Do not mix with fertilizers high in copper, sulfur, minerals or oils.

## Guaranteed richness (%w/w)

|  |        |
|--|--------|
| Free amino acids                               | 5,1%   |
| Total nitrogen (N)                             | 1,7 %  |
| Ammoniacal nitrogen (N)                        | 1,6 %  |
| Organic nitrogen (N)                           | 0,1 %  |
| Water-soluble calcium oxide (CaO)              | 14,3%  |
| Calcium oxide (CaO) complexed by gluconic acid | 14,3 % |
| Boron (B) soluble in water                     | 1,2 %  |

## Gly (1.25%)

Method of obtaining amino acids: obtained by synthesis

pH range in which good stability of the complexed fraction is guaranteed: pH between 3 and 9

## Dosage and time of application

| Foliar application                  |                                    |
|-------------------------------------|------------------------------------|
| General                             | 200-300 cc/hL.<br>2-3 applications |
| Olives, apple trees                 | 300 cc/hL                          |
| Vegetables and Ornamentals          | 100-150 cc/hL                      |
| Beetroot                            | 250 cc/hL                          |
| Citrus, cherry, peach and nectarine | 250-300 cc/hL                      |
| Fertigation                         |                                    |
| General                             | 5-8 L/Ha                           |

## Net mass

1L = 1,285kg  
5L = 6,43 kg  
20L = 25,7 kg  
200L = 257 kg  
1000L = 1285 kg

# Aminat Magnum

Amino acids



## Guaranteed richness (%w/w)

|                      |      |
|----------------------|------|
| Free amino acids     | 72 % |
| Total nitrogen (N)   | 13%  |
| Organic nitrogen (N) | 12%  |

His (3.7%)-Ile (0.6%)-Leu (9%)-Lys (5.6%)-Met (0.6%)-Pro (2.8%)-Tyr (1.6%)-Thr (6.1%)-Val (5.2%)-Asp (7.6%)-Glu(6.3%)-Ala(10.2%)-Arg(1.8%)-Phe (4.7%)-Gly (3.5%)-Ser (2.4%)

**Class A:** heavy metal content below the limits allowed for this classification.

**Method of obtaining amino acids:** acid hydrolysis of proteins of vegetable origin (soy).

## What does it provide us?

**Aminat Magnum** is a purified compound that comes in the form of micro granules, based on a high content of amino acids and nitrogen. The product has been developed for use by foliar application or root treatment to promote crop growth and development. **Aminat Magnum** is especially indicated for use in order to overcome critical stages within the growth process or stressful situations.

It is especially recommended to stimulate the process of rooting, flowering, fruit formation, ripening and promote growth with respect to all types of crops (horticultural products, citrus, stone and seeds carrying fruit trees, plants, etc.)

## Compatibility

Do not mix with mineral oils, products containing sulfur or copper and alkaline reaction products.

## Net mass

1kg, 5kg, 20kg

## Dosage and time of application

| Crops                         | Foliar application   | Fertigation                                  |
|-------------------------------|--|--|
| Citrus and fruit trees        | 100-200 g/hl. Apply various treatments in times of great need of the crop. | 2-4 kg/ha. Divided into several applications |
| Vegetables                    | 50-150 g/hl. Apply various treatments in times of great need of the crop   | 1-4 kg/ha. Divided into several applications |
| Flowers and ornamental plants | 100-200 g/hL   | 1.5-3 kg/ha, 2-3 applications                |
| Tropical fruit trees          | 100-200 g/hl   | 2-4 kg/ha, 2-3 applications                  |

# Aminat Silica

Liquid mixture based on silicon and amino acids



## Guaranteed richness (%w/w)

|  |       |
|--|-------|
| Amorphous silicon oxide (SiO <sub>2</sub> ) suspended in water | 20 %  |
| Free amino acids   | 6,6 % |
| Total nitrogen (N)   | 1,4 % |
| Organic nitrogen (N)   | 1,4 % |

Gly (6.6%).

**Class A:** Heavy metal content below the limits allowed for this classification.

## What does it provide us?

**Aminat Silica** is a nutritional supplement that contains various active ingredients responsible for the regeneration of the plant that suffers biotic stress caused mainly by bacteria and viruses.

**Aminat Silica** promotes the formation and proliferation of meristematic cells, as well as mechanisms to restructure cells damaged by fungi and bacteria or the use of chemicals that damage plant tissues. The **Aminat Silica** formula contains fermented graminoid species, that are rich in polyunsaturated fatty acids, vital cell membrane components, polyphenols, ATP precursors, glutathione precursors and rich sources of amino acids. The amino acids in this formula do not act by biostimulating growth, but as regenerators of vascular tissues and scars.

## Compatibility

**Aminat Silica** is unstable in contact with acids and metals.

## Dosage and time of application

### Dosage:

Vegetables, fruit trees, citrus and subtropical trees. Perform several treatments depending on the level of the disease, approximately every 8-10 days during the whole crop cycle, especially after wet conditions.

### Foliar:

100 -150 liters/ha

### Root application:

2 -2,5 liters /ha

## Net mass

1L = 1,29 kg

5L = 6,43 kg

20L = 25,84 kg

1000L = 1292 kg

# Aminat I

## Amino acids



### What does it provide us?

**Aminat-I** is a formulated product with high concentration of free amino acids obtained by acid hydrolysis of plant matter. The elements contained in this product serve as a source of rapid nitrogen supply.

**Aminat-I** contains a balanced aminogram that allows its use at any time during crop development. This product is especially recommended in cold periods, as it promotes the development of the crop, reinforcing the vigor of the plants. It is also recommended to encourage the development of crops during their early stages (young or recently transplanted plants), during critical stages of growth.

### Compatibility

Do not mix with bases in general, with sulfates or phosphates. Do not mix with fertilizers high in copper, sulfur, minerals or oils.

### Net mass

1L = 1,24 kg  
5L = 6,22 kg  
20L = 24,88 kg  
1000L = 1244 kg

### Guaranteed richness (%w/w)

|   |        |
|---|--------|
| Free amino acids  | 32,6 % |
| Total Nitrogen (N)  | 8,4 %  |
| Organic nitrogen (N)  | 4,7 %  |
| Ammoniacal nitrogen (N)   | 1,4 %  |
| Urea nitrogen (N)   | 1,4 %  |
| His-Ile-Leu-Lys (5.7%)-Met-Pro-Tyr-Thr-Trp-Val-Asp-Glu (18.7%)-Ala-Arg-Phe-Gly (6.71%). |        |

*Salmonella*: Absent in 25 g of processed product

*Escherichia coli*: <1000 most probable number (MPN) per gram of processed product.

**Class A**: heavy metal content below the limits allowed for this classification.

### Dosage and time of application

#### Foliar application (2-4 applications)

|  |                 |
|--|-----------------|
| Citrus, fruit and olive trees, grapes: | 200 a 300 cc/hL |
| Vegetables:                            | 150 a 200 cc/hL |
| Ornamental::                           | 100 a 150 cc/hL |
| Rice, Cotton, Corn and Alfalfa:        | 200 a 250 cc/hL |
| Potato and beetroot:                   |                 |

#### Fertigation

|  |   |
|--|---|
| Citrus, fruit, olive and grape trees:  | 20 to 40 l/ha to be divided into several applications |
| Vegetables:                            |   |
| Ornamental:                            |   |
| Banana and tropical crops:             | 40 to 80 l/ha to be divided into several applications |
| Strawberry:                            | 1 to 3 l/ha to divide into several applications       |
| Cereals, Cotton, Alfalfa and Beetroot: | 10 to 20 l/ha per application in 4-6 applications     |



# Aminat-I Plus

Fertilizer with amino acids K 8



## What does it provide us?

**Aminat-I Plus** is a fertilizer made with high concentration of free amino acids obtained by acid hydrolysis of plant matter. The elements contained in this product function as a source of rapid supply of nitrogen and potassium. Therefore, it contains a balanced aminogram that allows its use at any time during the development of the crop.

**Aminat-I Plus** is recommended to promote the development of crops during their early stages (young or recently transplanted plants), during the critical stages of growth, so that they can develop with more strength and adequate nutrient intake.

## Compatibility

Do not mix **Aminat-I Plus** with oils, sulphur, alkaline pH products, or copper, except in olive groves.

## Net mass

1L = 1,23 kg  
5L = 6,15 kg  
20L = 24,6 kg  
1000L = 1232 kg

## Declared content (% w/w)

|  |       |
|--|-------|
| Free amino acids                                 | 20 %  |
| Total nitrogen (N)                               | 8 %   |
| Organic nitrogen (N)                             | 1,2 % |
| Ammoniacal nitrogen (N)                          | 2,2 % |
| Urea nitrogen (N)                                | 4,6 % |
| Water-soluble potassium oxide (K <sub>2</sub> O) | 8 %   |
| Chloride   | 6,2 % |
| pH   | 4,3   |

**Class A:** heavy metal content below the permitted limits for this classification.

### Origin of amino acids:

acid hydrolysis of vegetable proteins (100% soy).

**Aminogram:** Histidine (0,07 %), Valine (0,07 %), Isoleucine (0,5 %), Aspartic acid (1,09 %), Leucine (0,42 %), Glutamic acid (1,08%), Lysine (4,14 %), Alanine (0,95 %), Methionine (1,1 %), Arginine (1,1 %), Proline (1,89 %), Phenylalanine (0,66 %), Tyrosine (1,64 %), Glycine (13,32 %), Threonine (0,48 %), Serine (1,4 %), Cysteine (0,13 %).

## Dosage and time of application

### Foliar application

|   |                  |
|---|------------------|
| Citrus, fruit trees, olive trees and grapes | 200 - 300 cc/hL. |
| Vegetables:                                 | 150 - 200 cc/hL. |
| Ornamental:                                 | 100 - 150 cc/hL. |
| Cereals, Cotton, Alfalfa and Beetroot       | 200 - 250 cc/hL. |
| Wheat, Corn, Sunflower and Soybeans         | 150 - 250 cc/hL. |

### Fertigation

|  |   |
|--|---|
| Citrus, fruit, olive and grape         | 20-40 l/ha to be divided into several applications. |
| Vegetables                             |   |
| Ornamental:                            |   |
| Banana and tropical crops              | 40-80 l/ha to be divided into several applications. |
| Milling:                               | 1-3 l/ha to be divided into several applications.   |
| Cereals, Cotton, Alfalfa and Beetroot: | 10-20 l/ha to be divided into 4-6 Applications.     |
| Wheat, Corn, Sunflower and Soybeans    | 10-20 l/ha to be divided into 2-4 applications      |

# Natur Gordo

Solid fertilizer NK (Ca) 5-26 (3,8) with algae extract and amino acids



## Guaranteed richness (%w/w)

|  |       |
|--|-------|
| Free amino acids   | 2,8 % |
| Total nitrogen (N)   | 5 %   |
| Organic nitrogen (N)   | 0,6 % |
| Water-soluble potassium oxide (K <sub>2</sub> O)                     | 26 %  |
| Water-soluble calcium oxide (CaO)                                    | 3,8 % |
| Mannitol   | 1,2 % |
| His-Ile-Leu-Lys-Met-Pro-Tyr-Thr-Trp-Val-Asp-Glu-Ala-Arg-Phe-Gly-Ser. |       |

Obtaining amino acids:  
acid hydrolysis of vegetable proteins 100%  
(cereals and soybeans).

Class A: heavy metal content below  
the limits allowed for this classification.

## What does it provide us?

**Natur Gordo** is a solid and water-soluble fertilizer that combines essential nutrients, specific amino acids, and seaweed extracts. The amino acids enhance the synthesis of proteins and carbohydrates in plants, while the seaweed extracts improve metabolic processes.

Thanks to this composition, **NATUR GORDO** promotes uniform fruit growth, resulting in larger fruits with greater weight for a higher-quality harvest.

## Compatibility

**Natur Gordo** is compatible with most phytosanitary products, do not mix with oils, very acidic or very alkaline products.

**Net mass** 0,5 kg, 1 kg, 5 kg

## Dosage and time of application

| Crop                       | Foliate        | Root      | Dose   |
|----------------------------|----------------|-----------|--|
| Rice and corn              |                | 3-5 kg/ha | At the time of flowering.  |
| Eggplant, cucumber, pepper | 250-300 g/100L | 3-4 kg/ha | Every 7-10 days after the first fruits have set  |
| Cocoa                      | 200-250 g/100L |           | Apply at the beginning of fattening of the first fruits. Continue after curdling.        |
| Courgette                  | 200-300 g/100L | 3-4 kg/ha | Every 7-10 days after the first fruits have set.   |
| Citrus                     | 250-300 g/100L | 4-5 kg/ha | Apply at the beginning of fattening of the fruits. Reapply after 30-40 days.             |
| Strawberry                 | 250-300 g/100L | 3-4 kg/ha | Apply at the beginning of fattening of the first fruits. Continue after curdling.        |
| Fruit                      | 250-300 g/100L | 4-5 kg/ha | Apply at the beginning of fattening of the fruits. Reapply 15-20 days before collection. |
| Bean                       | 200-250 g/100L | 3-4 kg/ha | Every 7-10 days after the first fruits have set.   |
| Melon and Watermelon       | 200-300 g/100L | 3-4 kg/ha | 2-3 treatments during cultivation. Start at the first bloom and apply after 15-20 days   |
| Olive Tree                 | 150-200 g/100L | 4-5 kg/ha | Start at pre-flowering and apply 2 times per cycle                                       |
| Tomato                     | 250-300 g/100L | 4-5 kg/ha | Apply every 7-10 days from the 2nd-3rd bunch   |
| Grapevine                  | 250-300 g/100L | 4-5 kg/ha | Apply at the time of full fattening  |
| Other crops                | 250-300 g/100L | 4-5 kg/ha | Apply at times of growth and fattening of fruits.  |



# Seaweed

- Algamax-P
- Algamoto
- F-16
- Natlag Zn-Mn
- Natur Colortac



# Algamax-P

Solid seaweed extract



| Guaranteed richness (%w/w)                       |        |
|--|--------|
| Alginate acid                                    | 10,8 % |
| Mannitol   | 3,7 %  |
| Water-soluble potassium oxide (K <sub>2</sub> O) | 19,6 % |
| Total nitrogen (N)                               | 2,3 %  |
| Seaweed extract ( <i>Ascophyllum nodosum</i> )   | 100 %  |

*Salmonella spp:*  
Absent in 25 grams of processed product.

*Escherichia coli:*  
< 1,000 most probable number (MPN) per gram of processed product.

**Class A:** heavy metal content below the limits allowed for this classification.

## What does it provide us?

**Algamax-P** is a seaweed extract of *Ascophyllum nodosum* 100% that confers to the plant various natural metabolites in high concentration that have as a common characteristic to favor the strengthening of the plant. It is a 100% water-soluble product, developed for the activation of enzymatic and metabolic processes.

**Algamax-P** promotes the development of budding root tissue, as well as the development of more vigorous shoots with higher chlorophyll content. It stimulates a uniform flowering with a higher content of viable pollen, stimulates fruit set and protects from abortive processes, favors homogeneous fattening of the fruit and increases the accumulation of reserve. Its high content of organic matter favors the development of the crop.

## Compatibility

**Algamax-P** is not compatible with strong oxidants and cannot be exposed to high-temperature heating.

## Net mass

100g, 200g, 250g, 500g, 1kg, 5kg, 20kg

## Dosage and time of application

Used on vegetables, fruit trees, palm trees, flowers, field crops, forage crops, ornamentals, grass and golf courses, as follows:

|  |
|--|
| <b>Foliar application</b>  |
| Dilute the product 3000-4000 times in water and perform 3-4 continuous applications at intervals of 20 days. |
| <b>Fertigation</b>   |
| 1,5 - 2 kg/ha.   |
| <b>Root treatment</b>  |
| 1 Tn of seeds is treated with 1-2kg of product.  |
| <b>Root treatment</b>  |
| Dilute 1kg of product 2500 - 3000 times in water and apply to the roots.                                     |

# Algamoto

Liquid fertilizer with seaweed extract



## What does it provide us?

**Algamoto** is a 100% organic product that contains a high concentration of pure algae extract (*Ascophyllum nodosum*) that contributes to the plant with nitrogen and potassium, as well as secondary elements (magnesium, manganese, boron, zinc, copper etc.), essential for the proper development of vegetables. It also promotes the homogeneity of the fruits, allowing a suitable growth of these. It is recommended to use **Algamoto** from sprouting, in pre-flowering, flowering and in the stages of main development of the harvest.

## Compatibility

**Algamoto** is compatible with all phytosanitary and nutritional products except those with very acidic pH.

## Net mass

1L = 1,3 kg  
5L = 6,49 kg  
20L = 25,96 kg  
1000L = 1298 kg

| Guaranteed richness (%w/w)                       |        |
|--|--------|
| Mannitol   | 0,9 %  |
| Alginic acid                                     | 3,8 %  |
| Total nitrogen (N)                               | 2,9 %  |
| Water-soluble potassium oxide (K <sub>2</sub> O) | 7,3 %  |
| Boron (B) soluble in water                       | 0,2 %  |
| Water-soluble copper (Cu)                        | 0,08 % |
| Copper (Cu) chelated by EDTA                     | 0,08 % |
| Water-soluble iron (Fe)                          | 1,2 %  |
| Iron (Fe) chelated by EDTA                       | 1,1 %  |
| Water-soluble manganese (Mn)                     | 0,5 %  |
| Manganese (Mn) chelated by EDTA                  | 0,4 %  |
| Water-soluble zinc (Zn)                          | 0,5 %  |
| Zinc (Zn) chelated by EDTA                       | 0,4 %  |

Class A: Heavy metal content below the limits allowed for this classification

## Dosage and time of application

| Foliar application                    |  |
|---------------------------------------|--|
| Fruit trees, Citrus                   | 125-200 cc/100L at the beginning of sprouting, just before the fruit begins fattening. |
| Melon, watermelon, zucchini, cucumber | 100 150 cc/100 L. As soon as the first 3-4 leaves appear.                              |
| Strawberry                            | 150 - 200 cc/ 100L. As soon as rooting is done and when the first flowers appear.      |
| Tomato and eggplant                   | 100- 150 cc/100L. In seedlings and after transplantation.                              |
| Potato and onion                      | 150 200 cc/100L. When the plants are 10-15 cm tall.                                    |
| Lettuce and celery                    | 200 cc/ 100 L. As soon as the first 3-4 leaves appear.                                 |
| Grapes                                | 150 cc/100L. From the extended leaves to the environment.                              |
| Banana                                | 150 cc/100L. Applied with phytosanitary treatments.                                    |

# F-16

Liquid fertilizer with seaweed extract PK12-16 with Molybdenum (Mo)



## What does it provide us?

**F-16** helps plant growth and development. It is made with natural extracts of seaweed (*Aschophyllum nodosum*) that favor the growth of the leaves, increasing the production and quality of the fruits. It is rich in phosphorus, vital in the transfer of energy in the plant and helps chemical reactions within the plant; and potassium, crucial for plant physiology

## Compatibility

**F-16** is compatible with all plant protection and nutritional products except those with acid pH.

**F-16** is unstable in contact with acids, bases, oxidizing agents and metals

## Net mass

1 L = 1,37 kg, 5 L = 6,84 kg, 20 L = 27,36 kg

## Guaranteed richness (%w/w)

|  |        |
|--|--------|
| Mannitol   | 0,5 %  |
| Water-soluble phosphorus pentaoxide (P <sub>2</sub> O <sub>5</sub> ) | 12,8 % |
| Water-soluble potassium oxide (K <sub>2</sub> O)                     | 17,4 % |
| Molybdenum (Mo) Soluble in water                                     | 0,2 %  |

## Class A:

Heavy metal content below the limits allowed for this classification.

## Dosage and time of application

### Foliar application

| Crops                                    | Dose (cc/100L.) | Moment of application   |
|--|-----------------|---|
| Fruit trees, Citrus                      | 150-200         | At the beginning of sprouting, just before adjustment and the fruit begins fattening.   |
| Melon, watermelon, zucchini and cucumber | 100-150         | As soon as the first 3-4 leaves appear. Apply the treatment regularly every 10-12 days. |
| Potato and onion                         | 150             | When plants are 10-15 cm tall   |
| Tomato and eggplant                      | 100-150         | In seedlings and after transplantation  |
| Strawberry                               | 150             | As soon as rooting is done and when the first flowers appear                            |

# Natlag Zn-Mn

Liquid fertilizer with seaweed extract with micronutrients



## Guaranteed richness (%w/w)

|  |           |
|--|-----------|
| Mannitol                                       | 0,12 %    |
| Water-soluble manganese (Mn)                   | 8 %       |
| Manganese (Mn) chelated by LS                  | 8 %       |
| Water-soluble zinc (Zn)                        | 6 %       |
| Zinc (Zn) chelated by LS                       | 6 %       |
| Seaweed extract ( <i>Ascophyllum nodosum</i> ) | 100%      |
| Conductivity                                   | 2,68 dS/m |

pH range in which good stability of the chelated fraction is guaranteed:  
pH between 4.5 and 9

### Class A:

heavy metal content below the limits allowed for this classification

## What does it provide us?

**Natlag Zn-Mn** is a fertilizer formulated with seaweed extract (*Ascophyllum nodosum*) and chelated microelements (Zn and Mn). Its application (foliar or fertigation) serves for preventive or curative treatments in both vegetables and fruit trees.

**Natlag Zn-Mn** is developed for the activation of enzymatic processes that contribute to the formation of proteins involved in the different physiological states of the plant. Zinc and manganese are two essential microelements for the formation of chlorophyll and photosynthesis, in addition Zinc allows to avoid the destruction of auxins and Manganese is a catalyst for the reduction of oxidation reactions in various metabolic processes

## Compatibility

**Natlag Zn-Mn** cannot be mixed with sulfur or alkaline products (bases).

## Net mass

1L = 1,49 kg

5L = 7,44 kg

1000L = 1487 kg

## Dosage and time of application

### Foliar application

|  |                                      |
|--|--------------------------------------|
| Citrus:  | 250 500 cc/hl.<br>2-3 applications.  |
| Grapes, Olive and Fruit Trees:                   | 200 350 cc/hl.<br>2-3 applications.  |
| Horticulture, strawberries and ornamental trees: | 250 400 cc/hl                        |
| Cereals:   | 250- 350 cc/hl.<br>1-2 applications. |

### Fertigation

3 -5 l/ha. 2 -3 applications

### Hydroponics

25 nutrient solution of 35 cc/m<sup>3</sup>



# Natur Colortac

Liquid fertilizer with seaweed extract and amino acids



| Guaranteed richness (%w/w)  |       |
|---|-------|
| Free amino acids  | 6 %   |
| Total nitrogen (N)  | 3 %   |
| Organic nitrogen (N)  | 2,8 % |
| Water-soluble phosphorus pentaoxide (P <sub>2</sub> O <sub>5</sub> )              | 2,7 % |
| Water-soluble potassium oxide (K <sub>2</sub> O)                                  | 8 %   |
| Mannitol  | 1%    |
| Seaweed extract ( <i>Ascophyllum nodosum</i> )                                    | 100%  |
| Arg (2%) - Gly(2%) - Lys (2%)   |       |
| Class A:<br>heavy metal content below the limits allowed for this classification. |       |

## What does it provide us?

**Natur Colortac** is a blend of PK with pure seaweed extract of *Ascophyllum nodosum* and amino acids of vegetable origin.

- Color induction: Uniformizes and improves the color of fruits, improving the opportunities for classification and marketing of the genus.
- Increases the volume of early production that allows you to go to market earlier and with more fruit, a key factor to maximize your profitability.
- Uniformity of harvest: Facilitates work and reduces labor costs.
- Promotes the ripening of the fruit through an exclusive mode of action This does not unbalance the crop giving it a longer life.
- It does not shorten the life after harvest, gives quality and firmness to the tissues and prevents losses due to dehydration.

## Compatibility

**Natur Colortac** is compatible with most fertilizers and phytosanitary products. Before preparing the final mixture, do a compatibility test.

## Dosage and time of application

| Foliar application                       |            |   |
|--|------------|---|
| Table grapes                             | 2-2,5 cc/L | Use 2-3 applications from the beginning of veraison every 12-15 days.                             |
| Strawberry, blueberry and blackberry     | 2-2,5 cc/L | Use every 10-15 days with the appearance of the first fruits.                                     |
| Citrus and fruit trees                   | 2-2,5 cc/L | Use 2-3 applications, Apply 1 week before the color change of the fruit, repeating 15 days later. |
| Apple, pear, peach, nectarine and cherry | 2-2,5 cc/L | Use 2-3 applications from the beginning of the veraison Every 12-15 days.                         |
| Olive trees and vegetables.              | 2-2,5 cc/L | Use 2-3 applications from the beginning of veraison   |

## Net mass

1L = 1,3 kg      20L = 25,8kg  
5L = 6,5 kg      1000L = 1290 kg

# Specials

- Natur Chito
- Natur Cuaje
- Natur Innova
- Natur Proline



# Natur Chito

Basic substance chitosan



## Guaranteed richness (%w/w)

|          |     |
|----------|-----|
| Chitosan | 5 % |
|----------|-----|

## What does it provide us?

**Natur Chito** is a formulation based on concentrated glucosamine extract (chitosan), obtained from the exoskeleton of crustaceans and mollusks.

**Natur Chito** is a broad-spectrum elicitor that has both bactericidal and fungicidal action. It is a product that can be used both in pre-harvest of established crops and in seed disinfection treatments. It does not contain residues and decomposes easily so it does not generate resistance problems. On the other hand, its optimal degree of acetylation increases the therapeutic window of the product in the cultures avoiding any type of burn or physiopathy.

## Compatibility

**Natur Chito** Do not mix with acid or alkaline reaction products. In case of mixtures consult the product compatibility table or contact the company's technical service

## Net mass

|              |                 |
|--------------|-----------------|
| 1L = 1,01 kg | 20L = 202 kg    |
| 5L = 5,05 kg | 1000L = 1010 kg |

## Dosage and time of application

| Crops                                  | Application No. min-max | Foliar   |
|--|-------------------------|--|
| Forest fruits, fruits and small fruits | 4-8                     | Inducer of resistance against fungi and bacteria, 50-200 g / hl, apply in foliar spray in 200-400 L / ha of water with a maximum of 100-800 g of a.i/ha and treatment, applying from the development of the 1st leaf to the development of the fruit. PS: 0 days |
| Cereals                                | 1                       | Inducer of resistance against fungi and bacteria, 50-100 g / hl, apply in foliar spray in 200-400 L / ha of water with a maximum of 100-400 g of a.i/ha and treatment, applying from the development of the 1st leaf to the development of the fruit. PS: 0 days |
| Vegetables, spices                     |                         |  |
| Crops for animal feed                  |                         |  |
| Cereal seed                            | 1                       | Inducer of resistance against fungi and bacteria, 50-100 g / hl, apply by spray in seed treatment before sowing. PS: 0 days.   |
| Potato seed                            |                         |  |
| Sugar beet seed                        |                         |  |
| Ornamental bulbous plants              |                         | Treatment of bulbs-immersion / soak: Inducer of resistance against fungi and bacteria, 50-100 g / hl, apply in foliar spray in 200-800 L / ha of water with a maximum of 100-800 g of a.i/ha and treatment, applying from germination.                           |
| Beet crops                             | 1-8                     | Inductor of resistance against fungi and bacteria, 50-200 g / hl, apply in foliar spray in 200-400 L / ha of water with a maximum of 100-800 g of a.i/ha and treatment, applying from the development of the leaves.   |

## Fertiirrigation

2-3 L/ha Apply via irrigation with the available system. The 1st application will be made 2 or 3 weeks after planting, depending on the type of crop in question, and whenever necessary

# Natur Cuaje

Solid Fertilizer NPK 3-27-10 with algae extract with micronutrients



## What does it provide us?

**Natur Cuaje** is a solid and soluble fertilizer that incorporates NPK, boron (B), molybdenum (Mo), zinc (Zn) and cobalt (Co), essential elements for optimal plant development. Thanks to the presence of *Ascophyllum nodosum* algae extract, this product acts on key biological processes in plants.

Specifically designed to promote fruit formation, **NATUR CUAJE** provides the necessary nutrients to stimulate pollination and ensure efficient fruit set. Its balanced formula contributes to improving the quality and quantity of the harvest, promoting a more solid and homogeneous fruiting.

## Dosage and Time of Application

| Cultivation               | Foliage        | Root      | Dose  |
|---------------------------|----------------|-----------|---|
| Rice and corn             |                | 3-5 kg/ha | At the time of flowering.   |
| Eggplant, cucumber pepper | 250-300g./100L | 3-4 kg/ha | Every 7-10 days after the first fruits have set.  |
| Cocoa                     | 200-250g./100L |           | Apply at the beginning of fattening of the first fruits. Continue after curdling        |
| Courgette                 | 200-300g./100L | 3-4 kg/ha | Every 7-10 days after the first fruits have set.  |
| Citrus                    | 250-300g./100L | 4-5 kg/ha | Apply at the beginning of fattening of the fruits. Reapply after 30-40 days             |
| Strawberry                | 250-300g./100L | 3-4 kg/ha | Apply at the beginning of fattening of the first fruits. Continue after curdling        |
| Fruit                     | 250-300g./100L | 4-5 kg/ha | Apply at the beginning of fattening of the fruits. Reapply 15-20 days before collection |
| Bean                      | 200-300g./100L | 3-4 kg/ha | Every 7-10 days after the first fruits have set.  |
| Melon and watermelon      | 200-300g./100L | 3-4 kg/ha | 2-3 treatments during cultivation. Start at the first bloom and apply after 15-20 days  |
| Olive Tree                | 150-200g./100L | 4-5 kg/ha | Start at pre-flowering and apply 2 times per cycle                                      |
| Tomato                    | 150-200g./100L | 4-5 kg/ha | Start at pre-flowering and apply 2 times per cycle                                      |
| Grapevine                 | 150-200g./100L | 4-5 kg/ha | Start at pre-flowering and apply 2 times per cycle                                      |
| Other crops               | 250-300g./100L | 4-5 kg/ha | Apply to fruit growth and fattening   |

| Guaranteed richness (%w/w)  |       |
|---|-------|
| Total nitrogen (N)  | 3 %   |
| Ammoniacal nitrogen (N)   | 2,6%  |
| Water-soluble phosphorus pentoxide (P <sub>2</sub> O <sub>5</sub> )                       | 27 %  |
| Phosphorus pentoxide (P <sub>2</sub> O <sub>5</sub> ) soluble in neutral ammonium citrate | 27%   |
| Water-soluble potassium oxide (K <sub>2</sub> O)  | 10 %  |
| Water-soluble boron (B)   | 2,1 % |
| Water-soluble cobalt (Co)   | 0,3 % |
| Water-soluble molybdenum (Mo)   | 3 %   |
| Water-soluble zinc (Zn)   | 3,5 % |
| Mannitol  | 2,6 % |
| Seaweed extract ( <i>Ascophyllum nodosum</i> )  | 5,8   |

## Compatibility

**Natur Cuaje** is compatible with most plant protection products, do not mix with oils, strongly alkaline or calcium-containing products.

## Net mass

1kg

5kg

# Natur Innova

## Potassium solution



### Guaranteed richness (%w/w)

|                                     |      |
|-------------------------------------|------|
| Water-soluble potassium oxide (K2O) | 10 % |
|-------------------------------------|------|

### What does it provide us?

**Natur Innova** is an emulsifiable liquid formulation prepared to be used with conventional spraying devices, from the beginning of the color change of the fruit until shortly before harvest. This makes it possible to reduce the number of harvests.

Potassium plays a crucial role in plant enzymes, and **Natur Innova** excels at encouraging the natural development of color in fruits without causing their premature softening or early aging.

**Natur Innova** contains the same natural substances that the fruits themselves produce to develop their color, resulting in a uniform and authentic coloration, without any negative impact on the quality of the final product.

### Compatibility

**Natur Innova** do not mix with other products. No apply with temperatures above 33° or when temperatures are going to be high during the following hours or days, that is, when a heat wave is expected. Do not apply when plants are suffering from any type of thermal, water or saline stress.

## Dosage and time of application

### General

We can apply 3cc/L in the full circle of coloring, the first with 10-25% of the color break, every 7-10 days.

**Grapes (Option 1)**

If the production is normal, make 3 foliar applications at a rate of 2.5 cc/L, being:

1. The application of spruce with clusters with 25-30% colored surface.
2. The second application 7 days after the first application.
3. The third application, 7 days after the second if necessary.

If the production is intense, make 3 foliar applications at a rate of 3 cc/L, being:

1. The application of spruce with clusters with 25-30% colored surface.
2. The second application 7 days after the first application.
3. The third application, 7 days after the second if necessary.

**Grapes (Option 2)**

If the production is normal, make 2 foliar applications at a rate of 2.5cc/L, being:

1. The first application with clusters with 25-30% coloured surface.
2. The second with clusters with 60-65% of the surface colored.

If the production is intense, make 2 foliar applications at a rate of 3 cc/L, being:

1. The first application with clusters with 25-30% coloured surface.
2. The second with clusters with 60-65% of the surface colored.

**Apples**

Make 2 applications per foliar application at a rate of 2.5-3 cc/L, being:

1. The first application 20-25 days before harvest.
2. The second application, 10-12 days before harvest.

**Stone fruits (cherries, peach...)**

Make 2 applications per foliar application at a rate of 2.5-3 cc/L, being:

1. The first application with 20-25% of the color break.
2. The second application, 7-8 of the first.

### Net mass

1L = 1,19 kg, 5L = 5,9 kg, 20L = 23,8 kg

# Natur Proline

Amino acid fertilizer K 20



## What does it provide us?

**Natur Proline** improves the quality of production and harvest. Its particular formula provides the product with high efficiency at fundamental moments of the vegetable cycle, thus obtaining a higher harvest quality.

**Natur Proline** is especially suitable for fruits and table grapes for the ripeness phase.

**Natur Proline** improves fruit quality parameters, such as sugar content, colour and production parameters: fruit size and weight.

## Compatibility

**Natur Proline** cannot be mixed with other products

## Net mass

1L = 1,37 kg

5L = 6,87 kg

20L = 27,46 kg

1000L = 1373 kg

## Guaranteed richness (%w/w)

|  |       |
|--|-------|
| Free amino acids                                 | 3,5 % |
| Total nitrogen (N)                               | 0,4 % |
| Organic nitrogen (N)                             | 0,4 % |
| Water-soluble potassium oxide (K <sub>2</sub> O) | 20 %  |
| Chloride   | 0 %   |

## Pro (3,5%)

Process of obtaining amino acids: fermentation of bacteria  
*Coryne bacterium glutamicum TS31.*

## Class A:

heavy metal content below the limits allowed for this classification.

## Dosage and time of application

### Foliar application

|   |  |
|---|--|
| Citrus and fruit trees                    | 250 - 300 cc/hl,<br>In 2-3 applications. |
| Grapes                                    | 250 - 300 cc/hl,<br>In 2-3 applications. |
| Strawberry, horticultural and industrial: | 200 - 300 cc/hl,<br>In 2-3 applications. |

### Fertigation

|   |   |
|---|---|
| Citrus and fruit trees                    | During the fattening, ripening and coloring stages of the fruit                                   |
| Strawberry, horticultural and industrial: | From fruits, roots and others begin to accumulate sugars.   |
| Olive trees                               | During fruit growth.  |
| Ornamental                                | Pre and post-flowering.   |
| Grape                                     | At the time of fattening the fruit or before a week. Before harvest 45 Days, 30 Days and 15 Days. |



# Rooters

- Rooter
- Rooter Plus





# Rooter

Liquid seaweed extract



## Guaranteed richness (%w/w)

|  |           |
|--|-----------|
| Alginate acid                                    | 2,5 %     |
| Mannitol   | 0,8 %     |
| Water-soluble potassium oxide (K <sub>2</sub> O) | 5,1 %     |
| Total nitrogen (N)                               | 2,3 %     |
| Free amino acids                                 | 1,1 %     |
| Conductivity                                     | 52,2 dS/m |

### Class A:

heavy metal content below the limits allowed for this classification.

## What does it provide us?

**Rooter** is an *Ascophyllum Nodosum* seaweed fertilizer concentrated with natural plant extracts and saccharides that improve root growth, with a base of seaweed extract, organic matter that promotes primary rhizogenesis

**Rooter** provides nitrogen to the plant.

**Rooter**, effects and results: fast and efficient exploration of the soil, improvement of water use efficiency, improvement of nutrient uptake, plant vigor and balanced plant growth. The content works as a source of energy.

## Compatibility

**Rooter** cannot be mixed with alkaline pH products

## Net mass

5L = 6,23kg  
200L = 2454 kg  
1000L = 1225 kg

## Dosage and time of application

### Traditional irrigation

2-3 L/ha per application      Every 10-15 days

### Fertigation

2-5 L/ha      Every 10-15 days

### Hydroponics

2-3 L in 100 m<sup>3</sup> solution      Punctual applications:  
200 cc/Ha

# Rooter Plus

Liquid seaweed extract



## Guaranteed richness (%w/w)

|  |         |
|--|---------|
| Alginate acid                                    | 2,7 %   |
| Mannitol   | 0,8 %   |
| Water-soluble potassium oxide (K <sub>2</sub> O) | 5,1 %   |
| Total nitrogen (N)                               | 2,4 %   |
| Free amino acids                                 | 1,1 %   |
| Conductivity                                     | 48 dS/m |

### Class A:

heavy metal content below the limits allowed for this classification

## What does it provide us?

**Rooter Plus** is an *Ascophyllum Nodosum* seaweed fertilizer concentrated with natural plant extracts and saccharides that improve root growth, with a base of seaweed extract, organic matter that promotes primary rhizogenesis.

**Rooter Plus** provides nitrogen to the plant.

**Rooter Plus**, effects and results: fast and efficient exploration of the soil, improvement of water use efficiency, improvement of nutrient uptake, plant vigor and balanced plant growth. The content works as a source of energy.

## Compatibility

**Rooter Plus** cannot be mixed with alkaline pH products.

## Net mass

5L = 6,19 kg

200L = 247,4 kg

1000L = 1237 kg

## Dosage and time of application

### Traditional irrigation

2-3 L/ha per application      Every 10-15 days

### Fertigation

2-5 L/ha      Every 10-15 days

### Hydroponics

2-3 L in 100 m<sup>3</sup> solution      Punctual applications:  
200 cc/ha



# Soluble NPKs

- Natur 20-20-20
- Natur 18-18-18



# Natur 20-20-20

NPK 20-20-20 fertilizer with micronutrients



## What does it provide us?

**Natur 20-20-20** is an NPK fertilizer for highly water-soluble fertigation with a high degree of purity. The 1:1:1 NPK ratio makes it versatile and balanced for use throughout the vegetable development cycle. By providing easily assimilated nitrogen, phosphorus and potassium, it guarantees complete plant nutrition and enhances growth and productivity.

## Compatibility

Do not mix with very alkaline products.

## Net mass

0,25 kg,  
0,5 kg,  
1 kg,  
5 kg,  
25 kg,  
1000 kg.

| Guaranteed richness (%w/w)   |         |
|--|---------|
| Total nitrogen (N)   | 19,3 %  |
| Nitric nitrogen (N)  | 6,1 %   |
| Ammoniacal nitrogen (N)  | 4 %     |
| Urea nitrogen (N)  | 9,2 %   |
| Water-soluble phosphorus pentoxide (P <sub>2</sub> O <sub>5</sub> )                                    | 20,8 %  |
| Phosphorus pentoxide (P <sub>2</sub> O <sub>5</sub> ) soluble in neutral ammonium citrate and in water | 20,8 %  |
| Water-soluble potassium oxide (K <sub>2</sub> O)   | 21,7 %  |
| Water-soluble boron (B)  | 0,1 %   |
| Water-soluble molybdenum (Mo)  | 0,15 %  |
| Water-soluble zinc (Zn)  | 0,009 % |

## Dosage and time of application

| Fertigation                                     |                             |
|---|-----------------------------|
| Concentration in irrigation water: 0.5 - 2 g/l. |                             |
| Citrus and fruit trees                          | 10-25 kg/ha and application |
| Horticultural crops                             | 10-25 kg/ha and application |
| Flowers and ornamental plants                   | 10-15 kg/ha and application |
| Tropical fruit trees                            | 10-25kg/ha and application  |
| Olive trees and vineyards                       | 10-25 kg/ha and application |

# Natur 18-18-18

NPK 18-18-18 fertilizer with micronutrients



## What does it provide us?

**Natur 18-18-18** is an NPK fertilizer for highly water-soluble fertigation with a high degree of purity. The 1:1:1 NPK ratio makes it versatile and balanced for use throughout the vegetable development cycle. By providing easily assimilated nitrogen, phosphorus and potassium, it guarantees complete plant nutrition and enhances growth and productivity.

## Compatibility

Do not mix with very alkaline products.

## Net mass

0,25 kg,  
0,5 kg,  
1 kg,  
5 kg,  
25 kg,  
1000 kg.

## Guaranteed richness (%w/w)

|  |        |
|--|--------|
| Total nitrogen (N)   | 18 %   |
| Nitric nitrogen (N)  | 5 %    |
| Ammoniacal nitrogen (N)  | 7,3 %  |
| Urea nitrogen (N)  | 5,7 %  |
| Water-soluble phosphorus pentoxide ( $P_2O_5$ )                                    | 18 %   |
| Phosphorus pentoxide ( $P_2O_5$ ) soluble in neutral ammonium citrate and in water | 18 %   |
| Water-soluble potassium oxide ( $K_2O$ )   | 18 %   |
| Water-soluble boron (B)  | 0,02 % |
| Water-soluble manganese (Mn)   | 0,02 % |
| Water-soluble molybdenum (Mo)  | 0,05 % |
| Water-soluble zinc (Zn)  | 0,05 % |

## Dosage and time of application

### Fertigation

Concentration in irrigation water: 0.5 – 2 g/l.

|                               |                             |
|-------------------------------|-----------------------------|
| Citrus and fruit trees        | 10-25 kg/ha and application |
| Horticultural crops           | 10-25 kg/ha and application |
| Flowers and ornamental plants | 10-15 kg/ha and application |
| Tropical fruit trees          | 10-25kg/ha and application  |
| Olive trees and vineyards     | 10-25 kg/ha and application |



# Salinity corrector

- Natur Sal
- Sal Complex





# Natur Sal

Complexed calcium solution



## Guaranteed richness (%w/w)

|                                     |     |
|-------------------------------------|-----|
| Water-soluble calcium oxide (CaO)   | 10% |
| Calcium oxide (CaO) complexed by LS | 10% |

pH range in which good stability of the complexed fraction is guaranteed: pH between 2 and 10

## What does it provide us?

**Natur Sal** is a liquid product formulated with soluble calcium complex with organic acids that is responsible for repairing calcium deficiency in plants. This essential macronutrient for vegetables is responsible for root growth and improving fruit quality, as it is crucial at the structural level for the plant, providing rigidity to the cell walls. In addition to the above, it participates in numerous physiological processes. It is developed to reduce the negative effects of excess sodium (Na) dedicated to soil and irrigation water.

## Compatibilidad

**Natur Sal** cannot be mixed with mineral oils, iron chelates and highly acidic reaction products. Unstable in contact with acids, bases and oxidizing agents.

## Net mass

1L = 1,3 kg  
5L = 6,5kg  
20L = 26kg  
1000L = 1300kg

## Dosage and time of application

### According to the characteristics of the soil:

|                                 |  |
|---------------------------------|--|
| Compact and waterproof terrain: | 20 - 40 L/ha   |
| Sodic and cracked soils:        | 40 - 60 L/ha   |
| Rising problems:                | 50 - 60 L/ha distributed during the rearing cycle        |
| Normal terrain:                 | 2,5 - 5 L/ha every 1 to 2 weeks during fruit development |

### According to the characteristics of the water:

|                                       |                                    |
|---------------------------------------|------------------------------------|
| Average saline water (1,5gr/L):       | 12 - 25 cc/m <sup>3</sup> of water |
| Saline water (1.5 to 2.5gr/L):        | 35 cc/m <sup>3</sup>               |
| Very saline water (more than 2,5g/L): | 60 cc/m <sup>3</sup>               |

# Sal Complex

Fertilizer NK (Ca) 6-13 (11)



## What does it provide us?

**Sal Complex** is a solid formulation with high contents of Calcium and Potassium. It has been developed to activate the roots, optimize calcium and potassium nutrition, protect plants against salinity, condition the soil and improve the mechanisms of taking and transporting water and nutrients in the plant.

**Sal Complex** has a fast and marked effectiveness thanks to its content in Potassium and Calcium, to a high concentration of organic acids of low molecular weight. This formulation markedly improves the physiology of the plant and increases the resistance of crops to the stress caused by high salinity in the soil.

## Compatibility

Avoid mixing with very alkaline products, such as NaOH and carbonates due to their reactivity and foaming.

Do not mix with fertilizers rich in sulfates, carbonates or phosphorus. Do not mix with amino acids, polyphosphates or trifluralins

## Net mass

1 kg, 5 kg

## Guaranteed richness (%w/w)

|  |        |
|--|--------|
| Total nitrogen (N)                               | 6,5 %  |
| Nitric nitrogen (N)                              | 5,1 %  |
| Ureic nitrogen (N)                               | 1,4 %  |
| Water-soluble potassium oxide (K <sub>2</sub> O) | 13,7 % |
| Water-soluble calcium oxide (CaO)                | 11,7 % |
| Calcium oxide (CaO) complexed by citric acid     | 11,7 % |

pH range in which good stability of the complexed fraction is guaranteed:  
pH between 3 and 11

## Dosage and time of application

### Root

**(Ornamental, horticultural, woody, citrus, etc.)**

|  |                             |
|--|-----------------------------|
| To encourage root growth and calcium nutrition | Apply weekly<br>1-2 kg / ha |
| To protect the plant against salinity          | Apply weekly<br>2-3 kg / ha |



# Chelates and correctors

- Cal Natur
- Magic Cal Flow
- Natur Boro
- Natur K30
- Natur Mn
- Natur Zn
- Natur Potásico
- Natur Sili-K



# Cal Natur

Nitrogenous solution with secondary elementes N (Ca) 8 (15,5)



## What does it provide us?

**Cal Natur** prolongs life after harvest, as it allows obtaining a more consistent fruit.

**Cal Natur** is indicated for the treatment of calcium assimilation disorders, to avoid or reduce the cracking of fruits and improve the conditions of their conservation, since it favors the consistency of the pulp of the fruit, to prevent putrefaction of the end of the flower, especially in tomato and pepper and for its correction in the first flowers. In medullary trees **Cal Natur** is effective against apical rot. In cotton it is used to control the capsules in early autumn.

## Compatibility

**Cal Natur** cannot be mixed with mineral oils, copper, sulfur or alkaline reaction products. It is not advisable to mix it with manure containing phosphates

## Net mass

1L = 1,39 kg  
5L = 6,93 kg  
200L = 277,2 kg  
1000L = 1386 kg

## Guaranteed richness (%w/w)

|                                   |        |
|-----------------------------------|--------|
| Total nitrogen (N)                | 8 %    |
| Nitric nitrogen (N)               | 8 %    |
| Water-soluble calcium oxide (CaO) | 15,5 % |

## Dosage and time of application

### Foliar application

2- 5 L/m<sup>3</sup>. 1 - 6 treatments

### Fertigation

|                                  |                        |  |
|----------------------------------|------------------------|--|
| General irrigation               | 1-4 l/m <sup>3</sup> . | Throughout the cycle   |
| Strawberry / Berries             | 300-1000 l/ha.         | The entire crop cycle.                                       |
| Citrus / Fruit trees             | 300-1000 l/ha.         | Greater needs in acidic soils and low water in bicarbonates. |
| Industrial tomato/ Horticultural | 200-600 l/ha.          | The entire crop cycle.                                       |
| Greenhouses                      | 300-900 l/ha.          | The entire crop cycle. Greater needs in fruiting.            |

# Magic Cal Flow

Limestone amendment. Calcium carbonate



## Guaranteed richness (%w/w)

|                           |      |
|---------------------------|------|
| Total calcium oxide (CaO) | 35 % |
| Neutralizing value        | 35 % |

Granulometric classification: Ground

## Dosage and time of application

| Crop   | Dosage (L/ha) | Time of foliar application                                    |
|--|---------------|---|
| Pomaceae.                                      | 30 - 35       | Distributed in doses of 5 to 7 L / ha / week via irrigation.  |
| Cherry, Plum, Walnut, Almond, Peach, Nectarine | 35 - 40       | Distributed in doses of 7 to 10 L / ha / week via irrigation. |
| Blueberry, Raspberries.                        | 35 - 40       | Distributed in doses of 7 to 10 L / ha / week via irrigation. |
| Strawberry.                                    | 35 - 40       | Distributed in doses of 3 to 5 L / ha / week via irrigation.  |
| Grapevine                                      | 30            | Distributed in doses of 6 L / ha / week via irrigation.       |
| Citrus and Avocados.                           | 30            | Distributed in doses of 3 to 6 L / ha / week via irrigation.  |
| Vegetables.                                    | 30            | Distributed in doses of 3 to 6 L / ha / week via irrigation.  |

Standard dose per hectare: 30 a 50 L/ha.

## Dosage to improve soil:

|                       |              |
|-----------------------|--------------|
| Medium texture soil:  | 35 L/ha      |
| Heavy texture floors: | 45 L/ha      |
| Saline soils:         | 45 a 60 L/ha |
| Sodium saline soil:   | 60 L/ha      |
| Acidic soil:          | 35 a 45 L/ha |

\*To increase the level of calcium in the fruit, apply early in the season and repeat in full bloom\*. 10 L of MAGIC CAL FLOW provide 6 units of water-soluble CaO.

## What does it provide us?

**Magic-Cal Flow** is a technologically advanced formulation with high calcium content, totally soluble in water. **Magic-Cal Flow** has been developed to meet the calcium requirements of crops under fertigation systems in soils, high conductivity soils, etc. It dissolves in the soil as an unsaturated complex where it tends to interact with the high salt content, saturates the clay-humic complex with calcium, while salts are removed from the complex, to facilitate leaching of salts, and meet calcium requirements in acidic soils.

**Magic-Cal Flow** is indicated for crops with high calcium requirements and in plantations of citrus, fruit trees, vegetables, ornamental and industrial crops, industrial tomato, olive and strawberry that require soil amendment.

## Compatibility

It is not advisable to mix **Magic-Cal Flow** with other products in fertigation systems. Once the product has been applied, the drip and/or injection systems should be washed well with water in order to avoid possible obstructions of the fertigation systems.

## Net mass

5 L = 8,42 kg, 10 L = 16,83 kg

# Natur Boro

Borated fertilizer in solution. Boron ethanolamine



## Guaranteed richness (%w/w)

Water-soluble boron (B) 11 %

## Dosage and time of application

### Foliar application

|                        |                  |  |
|------------------------|------------------|--|
| Fruit and citrus trees | 150 - 250 cc/hl. | 2-3 applications, post-flowering and fruit set |
| Olive tree             | 200 - 300 cc/hl. | 15-20 days before flowering                    |
| Sunflowers             | 250 - 400 cc/hl. | After the appearance 5-6 leaves                |
| Grape                  | 200 - 300 cc/hl. | Preflowering and after fruit setting           |
| Sugar beet             | 200 - 300 cc/hl. | After appearance 6-8 leaves                    |
| Strawberry             | 150 - 250 cc/hl. | On the white background and before flowering   |

### Fertigation

1.5 - 4 L/ha

**Note:** Use only in case of recognized need. Do not exceed the appropriate doses.

## What does it provide us?

**Natur Boro** is a complex liquid corrector of boron deficiency, which will be used in foliar and root spraying, formulated with complex agents that makes it fully assimilable by the plant.

**Natur Boro** is a nutritional supplement with a source of boron and rapid assimilation, preventive treatments and/or treatments for the modification of deficiencies. The availability of boron to the plant has an effect on calcium absorption and transport.

## Compatibility

**Natur Boro** cannot be mixed with oils, manganese sulphate, zinc sulphate and calcium salts.

## Net mass

1 L = 1,37 kg

5L = 6,86 kg

20 L = 27,42kg

1000 L = 1371 kg

# Natur K30

Potassium solution K30



| Guaranteed richness (%w/w)                       |      |
|--|------|
| Water-soluble potassium oxide (K <sub>2</sub> O) | 30 % |
| Chlorides  | 0 %  |

## What does it provide us?

**Natur K30** is a potassium solution of 300 g/L of potassium oxide. Potassium of easy absorption and developed both for foliar applications and for fertigation. It is a fertilizer high in potassium oxide. It presents an ideal formulation to complement the nutrition of the crop in stages of fruit development.

## Compatibility

Compatible with most common plant protection products. In case of doubt, perform a previous test.

## Net mass

1L = 1,4 kg  
5L = 6,9 kg  
200 L = 275,8 kg  
1000 L = 1379 kg

## Dosage and time of application

### Foliar application

250-500 ml/hl per application

### Fertigation

80-100 L/ha, divided into several applications (400-700 ml/m<sup>3</sup>)

**Note:** In general, it can be used in any crop, especially when you want to favor the development of the fruit or reserve organs of the plant with an increase in the yields of the quality and quantity parameters dependent on them. In olive groves, it is recommended to apply in autumn treatments to increase the oil yield of the fruit.



# Natur Mn

Complexed manganese solution



## Guaranteed richness (%w/w)

|  |    |
|--|----|
| Water-soluble manganese (Mn)                 | 7% |
| Manganese (Mn)<br>complexed by gluconic acid | 7% |

pH range in which good stability  
of the complexed fraction is guaranteed:  
pH between 2 and 9

## What does it provide us?

**Natur Mn** is a water-soluble liquid fertilizer, it is recommended to prevent and correct the lack of manganese, an essential element for the growth and flowering of plants.

**Natur Mn** is required for cellular respiration and to maintain balanced growth throughout the crop cycle, favors nitrogen assimilation and protein synthesis and contributes to the improvement of root system formation and plant metabolism.

## Compatibility

**Natur Mn** is not mixed with mineral oils and alkaline reaction products.

## Net mass

1L = 1,302 kg  
5L = 6,51 kg  
200 L = 26,04 kg  
1000 L = 1302 kg

## Dosage and time of application

### Foliar application

|                             |                           |
|-----------------------------|---------------------------|
| Fruit and citrus trees      | Overall:<br>200-300 cc/hl |
| Vegetable and<br>ornamental |                           |
| Rice, maize and wheat       |                           |
| Grape                       |                           |

### Fertiirrigación

Root track: 4-8L/Ha

#### Note:

Use only in case of recognized need.  
Do not exceed the appropriate doses

# Natur Zn

Complexed Zinc solution



## Guaranteed richness (%w/w)

|                                      |      |
|--------------------------------------|------|
| Water-soluble zinc (Zn)              | 7,5% |
| Zinc (Zn) complexed by gluconic acid | 7,5% |

pH range in which good stability of the complexed fraction is guaranteed: pH between 2 and 9.

## What does it provide us?

**Natur Zn** is inorganic fertilizer, allows to prevent and correct the lack of Zinc, promote growth and avoid citrus foliocollosis, stimulates the development of the terminal bud (short internodes) and allows the development of leaves, contributes to photosynthesis and the formation and action of chlorophyll and increases flowering.

**Natur Zn** improves the coloration, size and number of fruits and thus increases crop yields.

## Compatibility

**Natur Zn** is not mixed with mineral oils and alkaline reaction products

## Net mass

5L = 6,44 kg

## Dosage and time of application

### Foliar application

|                          |                           |
|--------------------------|---------------------------|
| Fruit and citrus trees   | Overall:<br>200-300 cc/hl |
| Vegetable and ornamental |                           |
| Rice, maize and wheat    |                           |
| Grape                    |                           |

### Fertigation

Root track: 4-8L/Ha

#### Note:

Use only in case of recognized need.  
Do not exceed the appropriate doses

# Natur Potásico

Potassium solution 32,6%



## Guaranteed richness(%w/w)

|  |        |
|--|--------|
| Water-soluble potassium oxide (K <sub>2</sub> O) | 32,6 % |
| Chloride   | 0 %    |

## Dosage and time of application

### Foliar application

|                   |               |
|-------------------|---------------|
| Citrus            | 150-175 cc/hl |
| Stone fruit trees | 200-300 cc/hl |
| The rest          | 150 200 cc/hl |

### Fertigation

|             |   |
|-------------|---|
| Citrus      | 100-150 cc/hl.<br>In various applications   |
| Fruit trees | 400-750 cc/hl.<br>In various applications   |
| Vegetables  | 1-2 l/1000 m <sup>2</sup><br>(twice a week) |

## What does it provide us?

**Natur Potásico** is a liquid fertilizer with high potassium content (K<sub>2</sub>O), an essential macronutrient for plants, as it participates in photosynthesis, respiration and other essential processes in the development of plants. In addition, **Natur Potásico** is characterized by providing the plant with a greater disposal of this nutrient whenever necessary.

**Natur Potásico** is especially indicated for the fattening and ripening stages, obtaining an increase in the size, better color and organoleptic properties of the fruits.

## Compatibility

**Natur Potásico** can be mixed with all products, except products that have calcium or with an acidic pH.

## Net mass

1L = 1,52 kg

5L = 7,61 kg

20 L = 30,42 kg

1000 L = 1521 kg

# Natur Sili K

Silicon-based liquid product



## Guaranteed richness (%w/w)

|  |        |
|--|--------|
| Amorphous silicon oxide (SiO <sub>2</sub> ) suspended in water | 31,7 % |
| Water-soluble potassium oxide (K <sub>2</sub> O)               | 15,2 % |

## What does it provide us?

**Natur Sili-K** is a concentrated liquid fertilizer made of potassium silicate that is characterized by its solubility. **Natur Sili-K** after absorption is deposited in an amorphous way on the cell walls contributing to the mechanical properties of the wall, improving its rigidity and elasticity thanks to the silicon present, whose deficiency can cause a weakening of the stems. Thus, **Natur Sili-K** increases the mechanical strength of the stems and strengthens the root system.

## Compatibility

**Natur Sili-K** cannot be mixed with other products.

## Net mass

1L = 1,45 kg  
5L = 7,24 kg  
20L = 28,94 kg  
1000L = 1447 kg

## Dosage and time of application

### Radicular via

|                               |           |  |
|-------------------------------|-----------|--|
| Citrus and fruit trees        | 7-10 l/ha | Several applications from fruit adjustment to ripening |
| Vegetables                    | 4-7 l/ha  |  |
| Flowers and ornamental plants | 4-7 l/ha  |  |
| Tropical fruit trees          | 5-10 l/ha |  |
| Olive trees and vines         | 4-9 l/ha  |  |



# Multiple deficiency corrector

- Natur B-Mo
- Natur B-Mo ECO
- Natur B-Mo-Co
- Natur Ca SET
- Natur Ca-B
- Natur Ca-B-Mg Flow
- Natur Elem
- Natur Ferro 48
- Natur K-S Flow
- Natur Nutri 4



# Natur B-Mo

Solid blend of mineral micronutrients. Boro (B) and Molybdenum (Mo).  
Boron ethanolamine and sodium salt.



## What does it provide us?

**Natur B-Mo** is a solution that prevents and corrects boron and molybdenum deficiencies avoiding the reduction of sprouting, growth and flowering. It favors fertilization, flowering, fruit setting and thickening of the fruit. It provides greater resistance to plant tissues. In addition, it increases the production of sugars

## Compatibility

**Natur B-Mo** cannot be mixed with oils, vamidothion, manganese sulphate, zinc sulphate and calcium salts.

## Net mass

500 mL = 0,63 kg  
1L = 1,26 kg  
5L = 6,29 kg  
20L = 25,16 kg  
1000L = 1258 kg

## Guaranteed richness (%w/w)

|                               |     |
|-------------------------------|-----|
| Boron (B) soluble in water    | 6 % |
| Water-soluble molybdenum (Mo) | 3 % |

## Dosage and time of application

### Foliar application

|                        |                  |  |
|------------------------|------------------|--|
| Fruit and citrus trees | 150 - 250 cc/hl. | 2-3 applications, post-flowering and fruit set |
| Olive tree             | 200 - 300 cc/hl. | 15-20 days before flowering                    |
| Sunflowers             | 250 - 400 cc/hl. | After the appearance 5-6 leaves                |
| Grape                  | 200 - 300 cc/hl. | Preflowering and after fruit setting           |
| Sugar beet             | 200 - 300 cc/hl. | After appearance 6-8 leaves                    |
| Strawberry             | 150 - 250 cc/hl. | On the white background and before flowering   |

### Fertigation

1.5 - 4 L/ha

# Natur B-Mo ECO

Solid blend of mineral micronutrients.  
Boro (B) and Molybdenum (Mo). Boron ethanolamine and sodium salt.



## What does it provide us?

**Natur B-Mo ECO** is a 100% inorganic product. It is a solution that prevents and corrects boron and molybdenum deficiencies avoiding the reduction of sprouting, growth and flowering. It prevents the appearance of chlorosis and necrosis, especially in terminal tissues. It favors fertilization, flowering, fruit setting and thickening of the fruit. In addition, it provides resistance to plant tissues and increases the production of sugars.

## Compatibility

**Natur B-Mo ECO** cannot be mixed with oils, vamidothion, manganese sulphate, zinc sulphate and calcium salts.

## Net mass

1L = 1,25 kg  
5L = 6,27 kg  
20L = 25,08 kg  
1000L = 1254 kg

## Guaranteed richness (%w/w)

|                               |     |
|-------------------------------|-----|
| Water-soluble boron (B)       | 6 % |
| Water-soluble molybdenum (Mo) | 3 % |

## Dosage and time of application

### Foliar application

|                        |                  |  |
|------------------------|------------------|--|
| Fruit and citrus trees | 150 - 250 cc/hl. | 2-3 applications, post-flowering and fruit set |
| Olive tree             | 200 - 300 cc/hl. | 15-20 days before flowering                    |
| Sunflowers             | 250 - 400 cc/hl. | After the appearance 5-6 leaves                |
| Grape                  | 200 - 300 cc/hl. | Preflowering and after fruit setting           |
| Sugar beet             | 200 - 300 cc/hl. | After appearance 6-8 leaves                    |
| Strawberry             | 150 - 250 cc/hl. | On the white background and before flowering   |

### Fertigation

1.5 - 4 L/ha



# Natur B-Mo-Co

PK 20-20 fertilizer solution with Boron (B), Cobalt (Co) and Molybdenum (Mo)



## Guaranteed richness (%w/w)

|   |       |
|---|-------|
| Water-soluble phosphorus pentoxide ( $P_2O_5$ ) | 20 %  |
| Water-soluble potassium oxide ( $K_2O$ )        | 20 %  |
| Water-soluble boron (B)                         | 1,5 % |
| Water-soluble cobalt (Co)                       | 0,5 % |
| Water-soluble molybdenum (Mo)                   | 1 %   |

## What does it provide us?

**Natur B-Mo-Co** is a fertilizer specially developed to improve the growth of flowers and fruits naturally. Trimonomic combination of high pollinating and germinating power that, together with phosphorus, potassium, molybdenum and boron, acts:

- Elongating the pollen tube favoring the fertilization of the flower.
- Increasing the germination of the pollen grain improving its quality.
- Inducing flowering and favoring the setting

## Compatibility

**Natur B-Mo-Co** cannot be mixed with products containing calcium, dicofol, dimethoate, oils and copper products.

## Net mass

1L = 1,34 kg  
5L = 6,69 kg  
20L = 26,76 kg  
1000L = 1338 kg

## Dosage and time of application

| Dose per crop                          | Foliar (cc/hL) | Fertigation (L/ha) | Frequency  |
|--|----------------|--------------------|--|
| Fruit horticultural                    | 200-250        | 2,5 - 5            | Every 10-15 days from first set.                   |
| Citrus and subtropical crops           | 200-250        | 2,5 - 5            | 2-3 applications: pre-flowering and post-flowering |
| Fruit trees, olive trees and vineyards | 150            | 2,5 - 5            | 2-3 applications: pre-flowering and post-flowering |

## General foliar application

1 - 2,5 L/ha

## General fertigation

2,5 - 5 L/ha

# Natur Ca SET

Calcium acetate with Boron



pH (1%) = 8,1

## What does it provide us?

**Natur Ca SET** is water-soluble mineral fertilizer powder based on Calcium and Boron, the product is free of Nitrates, Chlorides and Sulfates. It is developed to prevent and/or cure calcium deficiency, whose deficiency can cause different physiopathies in the plant. On the other hand, the boron present helps the plant breeding part and the transport of sugars. Boron deficiency can cause a negative impact on the growth of roots, foliage and fruits.

## Compatibility

**Natur Ca SET** can be mixed with other products those that contain a high pH or low in copper. Avoid contact with acidic materials.

## Net mass

1 kg  
5 kg

## Guaranteed richness (%w/w)

|                                   |      |
|-----------------------------------|------|
| Water-soluble calcium oxide (CaO) | 30 % |
| Boron (B) soluble in water        | 1 %  |

## Dosage and time of application

### Foliar application

|  |                  |   |
|--|------------------|---|
| Fruit trees, grapes, citrus and olive trees  | 3 - 5 kg/ha.     | From the appearance of the fruit every 15 days and under stressful conditions |
| Horticulture in greenhouse                   | 2 - 3 Kg/ha.     | From the set of fruits every 15 days  |
| Open field horticulture and industrial crops | 3 - 5 kg/ha.     | Set of fruits and under stress conditions.                                    |
| Nurseries                                    | 1 - 1,5 kg/ha.   | In case of tension conditions.  |
| Flowers and ornamental crops                 | 1,5 - 2,5 kg/ha. | Every 15-20 days and under stressful conditions                               |

# Natur Ca-B

Complexed calcium solution with boron (B)



## Guaranteed richness (%w/w)

|  |        |
|--|--------|
| Water-soluble calcium oxide (CaO)              | 15 %   |
| Calcium oxide (CaO) complexed by gluconic acid | 12,9 % |
| Water-soluble boron (B)                        | 1,5 %  |

pH range in which good stability of the complexed fraction is guaranteed:  
pH between 3 and 9

## What does it provide us?

**Natur Ca-B** is a liquid foliar fertilizer, characterized by its rapid absorption and assimilation by the crop. Its richness in Calcium and Boron is developed to promote the quality of the fruits and prevent nutritional imbalances due to the deficiency of these elements. It is recommended as a complementary source of calcium and boron for crops that need large amounts of these nutrients. It avoids bad effects on apple tree cultivation, also fruit cracks and flower rot in horticultural crops

## Compatibility

**Natur Ca-B** can be mixed with other products that contain a high pH or low in copper.

## Net mass

1 L = 1,39 kg  
5L = 6,93 kg  
20 L = 27,7kg  
1000 L = 1385 kg

## Dosage and time of application

| Crops                      | Foliar          | Fertigation  |
|----------------------------|-----------------|--------------|
| Apple tree                 | 300-500 ml/hl   | 4-6,5 L/ha   |
| Cherry and nectarine trees | 250-400 ml/hl   | 3-4 L/ha     |
| Horticultural              | 200-300 ml/hl   | 2,5-3,5 L/ha |
| Extensive cultivation      | 100-300 ml/100L | -            |
| Nurseries                  | 200-300 ml/100L | 1-2 L/ha     |

# Natur Ca-B-Mg Flow

Liquid mixture of Ca and Mg with micronutrients



| Guaranteed richness (%w/w)   |       |
|--|-------|
| Water-soluble calcium oxide (CaO)  | 12%   |
| Calcium oxide (CaO) complexed by gluconic acid   | 12%   |
| Water-soluble magnesium oxide (MgO)  | 2,5%  |
| Magnesium oxide (MgO) complexed by gluconic acid   | 2,5%  |
| Water-soluble boron (B)  | 0,5 % |
| pH range in which good stability of the complexed fraction is guaranteed: pH between 3 and 9 |       |

## What does it provide us?

**Natur Ca-B-Mg Flow** is a corrector of deficiencies associated with low levels of calcium, magnesium and boron. **Natur Ca-B-Mg Flow** prevents problems such as fruit splitting, leaf damage, tissue desiccation (grape stem) and loss of strength.

**Natur Ca-B-Mg Flow** improves pollination and increases the adjustment rate of the fruit. Provides greater resistance to tissues; the life after the harvest and the commercial value of the crops. **Natur Ca-B-Mg Flow** is harmless to plants as it is formulated with gluconic acid.

## Compatibility

**NATUR Ca-B-Mg Flow** can be mixed with other products containing a high pH or low in copper.

## Net mass

1L = 1,31 kg  
5L = 6,55 kg  
10L = 13,09 kg  
1000L = 1309 kg

## Dosage and time of application

| Crops                    |                  | Dose  |
|--------------------------|------------------|---|
| Grapes                   | 200 - 400 cc/hl. | From pre-flowering to full fruit formation                          |
| Citrus and fruit trees   | 200 - 400 cc/hl. | From pre-flowering to full fruit formation                          |
| Vegetable and ornamental | 200 - 400 cc/hl. | 2-3 applications from transplantation to flowering every 10-15 days |
| Rice, maize and wheat    | 200 - 300 cc/hl. | 2-3 applications from transplantation to flowering every 10-15 days |
| <b>General</b>           |                  |   |
| 200 - 400 cc/hL          |                  |   |

# Natur Elem

CFP 1 (C) (II) (b): Composite solid inorganic fertiliser based on micronutrients



## Guaranteed richness (% w/w)

|  |       |
|--|-------|
| Boron (B), as ethanalamine                         | 0,7%  |
| Copper (Cu) chelated by EDTA- complexed by HGA.    | 0,3%  |
| Iron (Fe) chelated by EDDHSA/EDTA-complexed by HGA | 7 %   |
| Manganese (Mn) chelated by EDTA- complexed by HGA  | 3,3 % |
| Molybdenum (Mo), as sodium salt                    | 0,1%  |
| Zinc (Zn) chelated by EDTA- complexed by HGA       | 0,6%  |

pH range in which good stability of the complexed fraction is guaranteed: pH between 2 and 12.

All the ingredients that make up this mixture belong to CMCl<sup>1</sup>  
<sup>1</sup>: substances and mixtures of virgin materials.

## What does it provide us?

**Natur Elem** is a solid fertilizer formulated with organic chelating agents that prevent and modify micronutrient deficiency in a wide range of crops.

**Natur Elem** regulates the exchange of actions and the availability of nutrients in the soil solution (C.E.C). This product is developed to be used throughout the entire crop cycle.

## Compatibility

**Natur Elem** is compatible with soluble fertilizers. Do not mix with oils or products that contain it. If the fertilizer contains phosphates it is advisable not to exceed pH 4. Avoid contact of the product with bases.

## Net mass

1kg, 5kg

## Dosage and time of application:

| Foliar                         |                                      |
|--------------------------------|--------------------------------------|
| Horticultural greenhouse       | 75 - 100 g/100 L                     |
| Citrus and subtropical crops   |                                      |
| Corn, Sunflower and Rice       |                                      |
| Banana, Strawberry             |                                      |
| Garlic, onion and carrot       |                                      |
| Potato and Beetroot            |                                      |
| In irrigation water:           |                                      |
| Citrus and fruit trees         | 30-60 g/tree                         |
| Horticultural and strawberries | 1-1.3 kg/ha per week                 |
| Flowers and ornamental plants  | 1 kg/ha per week                     |
| Bananas and tropical crops     | 30-70 g/plant                        |
| Hydroponic crops               | 20-30 g/m <sup>3</sup> feed solution |

# Natur Ferro 48

Iron chelate



pH (1%) = 8,8

## Guaranteed richness (%w/w)

|                                   |        |
|-----------------------------------|--------|
| Water-soluble iron (Fe)           | 6,25 % |
| Iron (Fe) chelated by [o-o] EDDHA | 5,7 %  |

pH range in which good stability of the complexed fraction is guaranteed: pH between 3,5 and 11.

## What does it provide us?

**Natur Ferro 48** is an iron deficiency corrector for plants. It is completely soluble in water and it has a high stability; it can be applied in any type of soils. Its high content of chelated iron means that it can be used in alkaline and calcareous soils, where the use of iron chelates is essential for the development of the plant.

## Compatibility

**Natur Ferro 48** is compatible with most fertilizers and phytosanitary products available, although it is advisable to carry out a previous test.

Do not mix with mineral oils or in a highly acidic or alkaline reaction. Incompatible with strong oxidizing agents, Aluminum in the presence of moisture/water.

**Natur Ferro 48** is incompatible with strong oxidizing agents and aluminum in the presence of moisture/water.

## Net mass

1kg, 5kg, 20kg, 500kg.

## Dosage and time of application

### Fruit trees, citrus trees, hazelnuts, etc:

|                                |                 |
|--------------------------------|-----------------|
| Freshly planted                | 5-15 gr/plant   |
| Start of production floor      | 15-30 gr/plant  |
| Trees grown in full production | 30-50 gr/plant  |
| Highly developed trees         | 50-100 gr/plant |

### Nurseries:

|                    |        |
|--------------------|--------|
| Per plant          | 1-3 gr |
| Per m <sup>2</sup> | 3-5 gr |

### Grapevine:

|                              |                |
|------------------------------|----------------|
| Freshly planted              | 3-5 gr/plant   |
| In production                | 5-10 gr/plant  |
| Horticultural and Ornamental | 1- 5 gr/sq.mt. |

# Natur K-S Flow

Potassium sulphate solution K(S) 36(31)



## What does it provide us?

**Natur K-S Flow** is a liquid fertilizer that helps the absorption of phosphorus and other micronutrients present in the soil. In addition, it favors the formation and ripening of the fruits.

- It is a high source of potassium and sulfur for an efficient supply.
- Favors a more uniform growth generating fewer imbalances.
- Increases the quantity and quality of proteins helping the conversion into carbohydrates, proteins and oils.
- It does not contain nitrogen or chlorine. High contribution of potassium and sulfur, essential for crops.
- Allows the absorption of potassium 30% more efficiently compared to other liquid fertilizers on the market.

## Compatibility

**Natur K-S Flow** can be mixed with the usual plant protection products without risk of raising the pH of the solution. Do not apply in hours of maximum sunshine.

## Net mass

1L = 1,5 kg, 5L = 7,4 kg,  
200 L = 296,6 kg, 1000 L = 1483 kg

## Guaranteed richness (%w/w)

|   |        |
|---|--------|
| Water-soluble potassium oxide (K <sub>2</sub> O)  | 36,6 % |
| Water-soluble sulphur trioxide (SO <sub>3</sub> ) | 31 %   |
| Chloride  | 0 %    |

## Dosage and time of application

### Foliar application

|                     |   |
|---------------------|---|
| Grapevine           | 150 - 250 cc/hL, after flowering, fruit fattening and initiation of veraison.           |
| Fruit               | 150 - 300 cc/hL, after thinning and during fattening.                                   |
| Ornamental          | 150 - 300 cc/hL, after flowering  |
| Banana              | 200 - 250 cc/hL, before the plant appears and after the fruit deflowering               |
| Citrus              | 250 - 350 cc/hL, after natural fruit fall, during fattening and 30 days before harvest  |
| Olive tree          | 250 - 500 cc/hL, after setting, bone hardening and color change.                        |
| Fruit horticultural | 300 - 400 cc/hL, after flowering, or in each of the blooms and fattening of the fruits. |
| Cotton              | 300 - 400 cc/hL, after flowering and fattening of the capsules                          |
| Strawberries        | 300 - 500 cc/hL   |

### Fertigation

|   |   |
|---|---|
| Olive tree  | 15 -60 cc/feet, flowering to fruit set  |
| Citrus  | 25 -50 cc/feet, 2-3 applications between setting and start of colour change   |
| Fruit   | 50 -75 cc/feet, 2-4 applications during fruit fattening                       |
| Cotton  | 6 - 12 L/ha hasta 30-60 L/ha, up to 30-60 L/ha, from the first capsules       |
| Strawberry, Melon, Watermelon and other Horticultural | 6 - 12 L/ha per week up to 20-90 L/ha, from the fruit set of the first fruits |
| Beetroot  | 12 L/ha per application up to 30-60 L/ha                                      |
| Rose bush and other ornamentals                       | 10 - 30 L/ha per application and not in flowering.                            |

# Natur Nutri 4

Liquid mixture of mineral micronutrients.

Boro (B) Ethanolamine, Manganese (Mn) Sulfate, Molybdenum (Mo) Sodium Salt, Zinc (Zn) Sulfate



| Guaranteed richness (%w/w)    |       |
|-------------------------------|-------|
| Boron (B) soluble in water    | 2,3 % |
| Water-soluble manganese (Mn)  | 2,7 % |
| Water-soluble molybdenum (Mo) | 0,2 % |
| Water-soluble zinc (Zn)       | 3 %   |

## What does it provide us?

**Natur Nutri 4** is composed of four essential micronutrients for the plant: Boron, Manganese, Molybdenum and Zinc. It is designed to correct the deficiencies of these elements in the crop.

The boron present allows the correct development of fruits and seeds; Manganese is essential in processes of photosynthesis and respiration, among others, so its deficiency can lead to certain problems to the crop; Molybdenum participates in different processes of the plant helping the correct transformation of nitrogen; finally, the Zinc present has a great relevance in the functioning and structure of vegetable proteins

## Compatibility

**Natur Nutri 4** is compatible with herbicides and glyphosphate without altering their properties.

## Net mass

0,5L = 0,66 kg,  
1L = 1,31 kg  
5L = 6,55 kg  
200 L = 262 kg  
1000 L = 1310 kg

## Dosage and time of application

| Crop                   | Foliar application                   | Fertigation                         |
|------------------------|--------------------------------------|-------------------------------------|
| Fruit and Citrus Trees | 4-5 L/ha, 2-4 applications per cycle | 6 L/ha, 2-3 applications per cycle  |
| Strawberry             | 2-4 applications per cycle           | 5 L/ha, 2-3 applications per cycle  |
| Vegetables             | 2-4 applications per cycle           | 5L/ha, 2-3 applications per cycle   |
| Melon and watermelon   | 2-4 applications per cycle           | 5 L/ha, 2-3 applications per cycle  |
| Vine and olive tree    | 2-4 applications per cycle           | 6 L/ha, 2-3 applications per cycle. |





# Organic material and humic acids

- Humsuper
- Orgo 40
- Natur Hum 25



# HumSuper

Humic acids from Leonardite



## Guaranteed richness (%w/w)

|  |       |
|--|-------|
| Water-soluble potassium oxide (K <sub>2</sub> O) | 19.7% |
| Total humic extract                              | 65%   |
| Humic acids                                      | 52%   |
| Fulvic acids                                     | 13%   |
| Leonardite                                       | 100%  |

Class A: heavy metal content below the limits allowed for this classification.

## What does it provide us?

**HumSuper** is a concentrated solid formulation of 100% Leonardite humic acids, totally soluble, adding to the soil active fertilizer with the remaining substances from the decomposition of organic matter.

**HumSuper** is an essential product within fertigation programs. Its use should be included within a strategy during the crop cycle, due to its intrinsic characteristics such as: solubility, stability, regular absorption in the soil, improvement of soil structure and cation exchange capacity. In the plant, it increases the production of enzymes, sugars, amino acids, etc. In the soil, microorganisms are activated, the cation exchange capacity is improved and the mineral-elements that are released and made available to the plant are improved, in addition to improving the structure of the soil.

## Compatibility

**HumSuper** is compatible with most fertilizers and plant protection products available. Do not mix with highly alkaline oils and reaction products.

## Dosage and time of application

### Foliar application

|   |                             |
|---|-----------------------------|
| Citrus fruits, fruit trees, vegetables and bananas: | 2-3 kg/ha, 3 applications   |
| Strawberry, raspberry, blueberry:                   | 0,5-2 kg/ha, 4 applications |
| Olive tree:   | 0,5-2 kg/ha, 2 applications |
| Vineyard, table grapes:                             | 0,4-1 kg/ha, 4 applications |
| Sunflowers and Corn:                                | 3-4 kg/ha                   |
| Soy beans:  | 3-4 kg/ha                   |

### Fertigation

1-2 kg/ha, 4 applications

## Net mass

1kg  
5kg  
20kg  
500kg

# Orgo 40

CFP 1 (A) (II): Liquid Organic Fertilizer NK 3-5,5



## What does it provide us?

**Orgo 40** is an organic fertilizer designed to revitalize soils and optimize crop performance. Its composition includes organic matter, humic-fulvic acids, nitrogen, potassium, and plant-based proteins, providing key benefits to improve soil structure, retain moisture, and enhance biological activity.

ORGO 40 facilitates the availability of essential nutrients and stimulates their absorption by plants, making it especially effective in soils with low organic matter levels. ORGO 40 promotes a balanced environment for microbial life, essential for achieving healthy soils and sustainable crops.

## Compatibility

**Orgo 40** is compatible with soluble fertilizers and plant protection products, as long as they have low pH.

## Net mass

5L = 6,4 kg, 20L = 25,76 kg, 1000L = 1288 kg

## Guaranteed richness (% w/w)

|  |        |
|--|--------|
| Total nitrogen (N)                       | 3,1 %  |
| Organic nitrogen (N)                     | 2,8 %  |
| Ammoniacal nitrogen (N)                  | 0,1 %  |
| Total potassium oxide (K <sub>2</sub> O) | 5,5 %  |
| Organic carbon (C <sub>org</sub> )       | 23,9 % |
| Dry matter                               | 58,2 % |
| C <sub>org</sub> /N <sub>tot</sub> ratio | 8,6    |

Origin of organic N: Fermentation of plant extracts

Class A: heavy metal content below the limits allowed for this classification.

## Dosage and time of application

### Foliar application

1-5 mL/L or 1-5 L/ha and application. When possible, in addition to foliar application, apply via irrigation or to the soil

### Localized riego, by drop or by system

Localized, drip or system irrigation

|   |  |
|---|--|
| Citrus, fruit, grape, horticultural, ornamental and others: | 40-300 l/ha spread throughout the cycle in preferably weekly or fortnightly applications from 5 to 40 l/ha |
|---|--|

### Surface, blanket, or gravity irrigation:

|  |  |
|--|--|
| Citrus, fruit, grape, horticultural, ornamental and other: | 50-400 l/ha, spread throughout the cycle in preferably weekly or fortnightly applications from 5 to 50 l / ha. |
|--|--|

### Sprinkler irrigation

|                  |  |
|------------------|--|
| Extensive crops: | 20-100 l/ha distributed throughout the cycle in preferably weekly or fortnightly applications of 5 to 10 l/ha. |
|------------------|--|

### Soil Preparation

|                |   |
|----------------|---|
| For all crops: | Spread evenly over the planting or sowing area about 10-100 l/ha before sowing or planting. |
|----------------|---|

### Saturated soils

A first application of 10-100 l/ha before sowing or planting. A few days after this first application but, before sowing or planting, give a generous irrigation to wash the salts and then continue with normal applications of the product, and if necessary, interspersed with abundant waterings to wash the salts.

# Natur Hum 25

Humic acids of leonardite



| Guaranteed richness (%w/w)                       |       |
|--|-------|
| Total humic extract                              | 25%   |
| Humic acids                                      | 10%   |
| Fulvic acids                                     | 15%   |
| Total Nitrogen (N)                               | 3%    |
| Water-soluble potassium oxide (K <sub>2</sub> O) | 6%    |
| Leonardite                                       | 100 % |

## What does it provide us?

**Natur Hum 25** is a liquid humic soil enhancer obtained from highly humified lignites (leonardite)

**Natur Hum 25** has a high concentration of humic acids and fulvic acids. The application of humic acids contributes significantly to improving the physicochemical and biological properties of the soil increasing fertility, and at the same time improves the process of releasing primary nutrients and micronutrients existing in the clay-humic complex, providing a better disposition and development of plant nutrients.

## Compatibility

**Natur Hum 25** cannot be mixed with low pH (acidic) products.

## Net mass

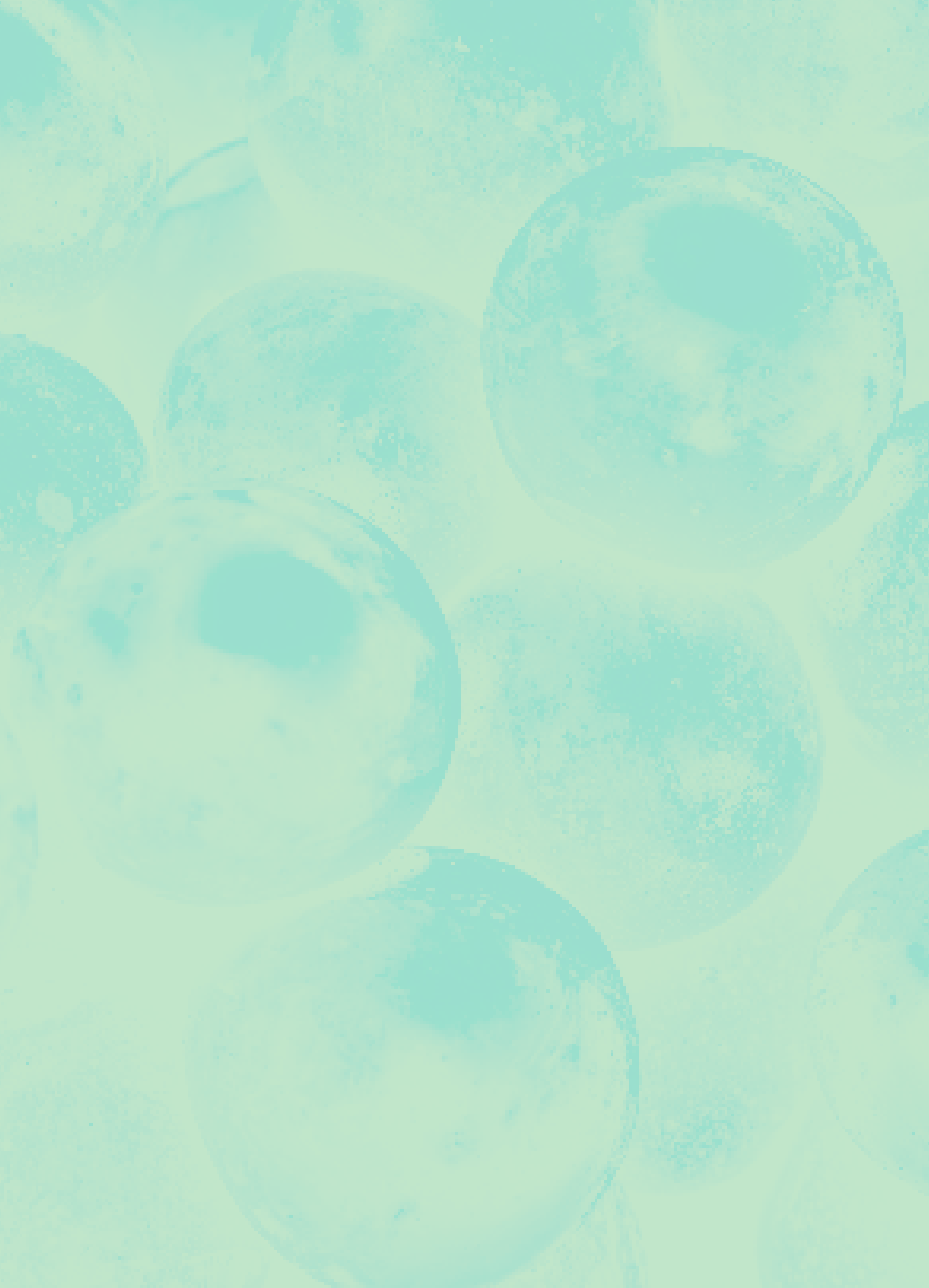
5L = 6,25 kg

20 L = 25 kg

1000 L = 1250 kg

## Dosage and time of application

| Foliar application          |                             |
|-----------------------------|-----------------------------|
| Sunflowers                  | 3-5 L/Ha. Use every 15 days |
| Maize and sorghum           | 3-6 L/Ha. Use every 15 days |
| Soybean                     | 5-8 L/Ha. Use every 15 days |
| Fertigation                 |                             |
| 300 cc/hL                   |                             |
| Sprinkler and flood systems |                             |
| 40-50 l/ha                  |                             |







# Naturland

Maker: Naturland Solutions S.L.  
Tel/Fax: +34 960 721 137  
[info@verdinatur.com](mailto:info@verdinatur.com)  
[www.verdinatur.com](http://www.verdinatur.com)